

3.3 Electricity

Figure / Table 3.17: Energy or fuel for cooking: Nketoana, Thabo Mafutsanyana and RSA

	Nketoana	Energy or fuel for cooking as a %: Nketoana	Thabo Mafutsanyana District	Energy or fuel for cooking as a %: Thabo Mafutsanyana	RSA	Energy or fuel for cooking as a %: RSA
None	28	0%	410	0%	31390	0%
Electricity	12831	74%	169669	78%	10675094	74%
Gas	466	3%	8192	4%	507616	4%
Paraffin	611	4%	15990	7%	1227337	8%
Wood	2817	16%	17840	8%	1807606	13%
Coal	391	2%	4288	2%	104171	1%
Animal dung	153	1%	1207	1%	45349	0%
Solar	16	0%	233	0%	22255	0%
Other	5	0%	56	0%	29344	0%

(Source: Census 2011)

Figure / Table 3.18: Energy or fuel for cooking: 2001-2011

Census 2001			Community Survey 2007			Census 2011		
	Total house-holds	% of house-holds		Total house-holds	% of house-holds		Total house-holds	% of house-holds
None	0	0%		0	0%		28	0%
Electricity	5327	36%		9195	55%		12831	74%
Gas	473	3%		450	3%		466	3%
Paraffin	2761	18%		3374	20%		611	4%
Wood	3214	22%		2197	13%		2817	16%
Coal	2726	18%		1130	7%		391	2%
Animal dung	457	3%		402	2%		153	1%
Solar	49	0%		0	0%		16	0%
Other	32	0%		0	0%		5	0%
Not applicable	-							
Total	15039			16748			17318	

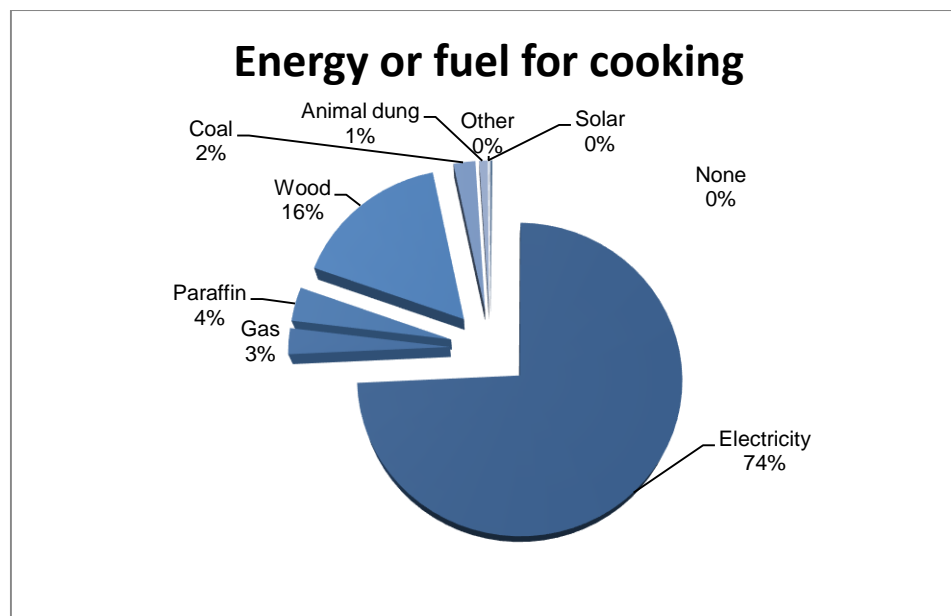
(Source: StatsSa)

Figure / Table 3.19: Energy or fuel for cooking according to category and per ward

	None	Electricity	Gas	Paraffin	Wood	Coal	Animal dung	Solar	Other
FS193: Nketoana	28	12831	466	611	2817	391	153	16	5
Ward 1	1	1628	60	32	178	27	2	-	-
Ward 2	4	1515	26	37	229	48	8	2	-
Ward 3	5	1929	15	44	131	14	28	6	2
Ward 4	3	1368	53	53	227	5	52	1	1
Ward 5	4	1215	53	124	314	21	22	-	-
Ward 6	-	1044	95	41	620	44	22	3	-
Ward 7	3	1490	66	72	398	72	13	-	1
Ward 8	4	1271	33	40	87	81	4	1	-
Ward 9	4	1370	65	168	635	80	2	3	-

(Source: StatsSa)

Figure / Table 3.20: Energy or fuel for cooking



(Source: StatsSa)

Figure / Table 3.21: Energy or fuel for heating: Nketoana, Thabo Mafutsanyana and RSA

	Nketoana	Energy or fuel for heating as a %: Nketoana	Thabo Mafutsanyana District	Energy or fuel for heating as a %: Thabo Mafutsanyana	RSA	Energy or fuel for heating as a %: RSA
None	1142	7%	14999	7%	1773372	12%
Electricity	9397	54%	105114	48%	8503109	59%
Gas	440	2%	7825	4%	357062	3%
Paraffin	447	3%	37974	17%	1230223	9%
Wood	4494	26%	33582	15%	2203384	15%
Coal	1193	7%	16486	8%	293949	2%
Candles (not a valid option)	0	0	-	0%	-	0%
Animal dung	185	1%	1612	1%	48251	0%
Solar	19	0%	281	0%	38370	0%
Other	2	0%	11	0%	2442	0%

(Source: Census 2011)

Figure / Table 3.22: Energy or fuel for heating: 2001-2011

Census 2001			Community Survey 2007			Census 2011		
	Total house-holds	% of house-holds		Total house-holds	% of house-holds		Total house-holds	% of house-holds
None	0	0%		0	0%		1142	7%
Electricity	4316	29%		5071	30%		9397	54%
Gas	166	1%		148	1%		440	2%
Paraffin	1337	9%		1887	11%		447	3%
Wood	3737	25%		3273	20%		4494	26%
Coal	4720	31%		5750	34%		1193	7%
Animal dung	470	3%		289	2%		0	0
Solar	57	0%		0	0%		185	1%
Other	233	2%		329	2%		19	0%
Not applicable	-			-			2	0%
Total	15039			16748			17319	

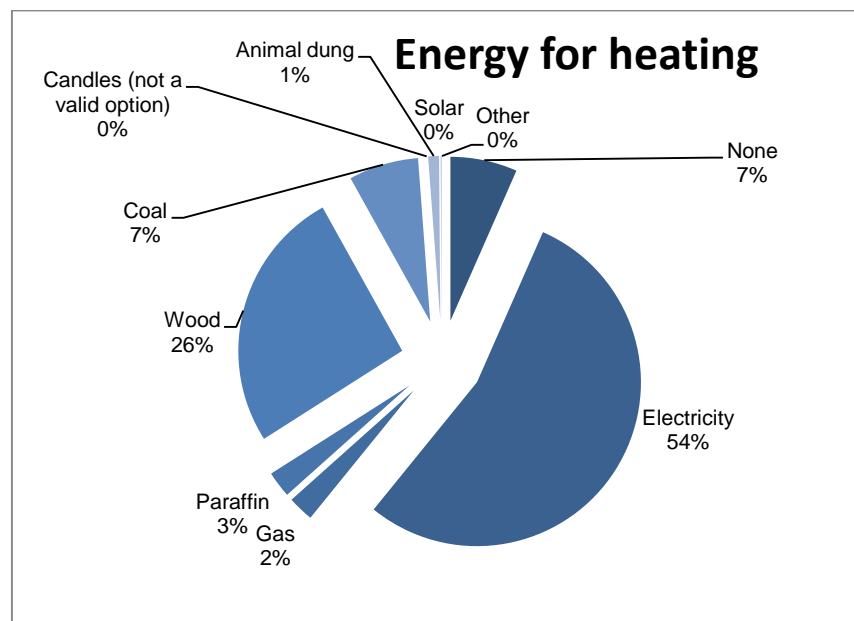
(Source: Census 2001, 2007, 2011)

Figure / Table 3.23: Energy or fuel for heating according to category and per ward

	None	Electricity	Gas	Paraffin	Wood	Coal	Candles (not a valid option)	Animal dung	Solar	Other
FS193: Nketoana	1142	9397	440	447	4494	1193	0	185	19	2
Ward 1	70	1267	40	27	394	126	-	3	1	-
Ward 2	235	879	29	29	548	136	-	12	1	1
Ward 3	160	1600	30	44	230	71	-	36	2	-
Ward 4	223	904	88	41	375	61	-	66	4	1
Ward 5	96	868	24	57	631	45	-	29	3	-
Ward 6	103	840	93	23	734	55	-	21	-	-
Ward 7	68	1264	77	67	473	150	-	12	2	-
Ward 8	99	830	28	40	206	311	-	5	3	-
Ward 9	87	944	29	119	904	239	-	1	3	-

(Source: StatsSA, Census 2011)

Figure / Table 3.24: Energy or fuel for heating



(Source: StatsSA, Census 2011)

Figure / Table 3.25: Energy or fuel for lighting: Nketoana, Thabo Mafutsanyana and RSA

	Nketoana	Energy or fuel for lighting as a %: Nketoana	Thabo Mafutsanyana District	Energy or fuel for lighting as a %: Thabo Mafutsanyana	RSA	Energy or fuel for lighting as a %: RSA
None	30	0%	426	0%	46621	0%
Electricity	14661	85%	189939	87%	12242401	85%
Gas	11	0%	246	0%	34347	0%
Paraffin	106	1%	2196	1%	426205	3%
Candles (not a valid option)	2459	14%	24625	12%	1649082	12%
Solar	50	0%	452	0%	51505	0%
Unspecified	-		-			
Not applicable	-		-			

(Source: Census 2011)

Figure / Table 3.26: Energy or fuel for lighting: 2001-2011

Census 2001			Community Survey 2007			Census 2011		
	Total house-holds	% of house-holds		Total house-holds	% of house-holds		Total house-holds	% of house-holds
None	0	0%		0	0%		30	0%
Electricity	11459	76%		12016	72%		14661	85%
Gas	20	0%		17	0%		11	0%
Paraffin	213	1%		375	2%		106	1%
Candles	3178	21%		4256	25%		2459	14%
Solar	101	1%		0	0%		50	0%
Other	67	1%		84	1%		0	0%
Not applicable	3	0%		0	0%		0	0%
Total	15039			16748			17317	

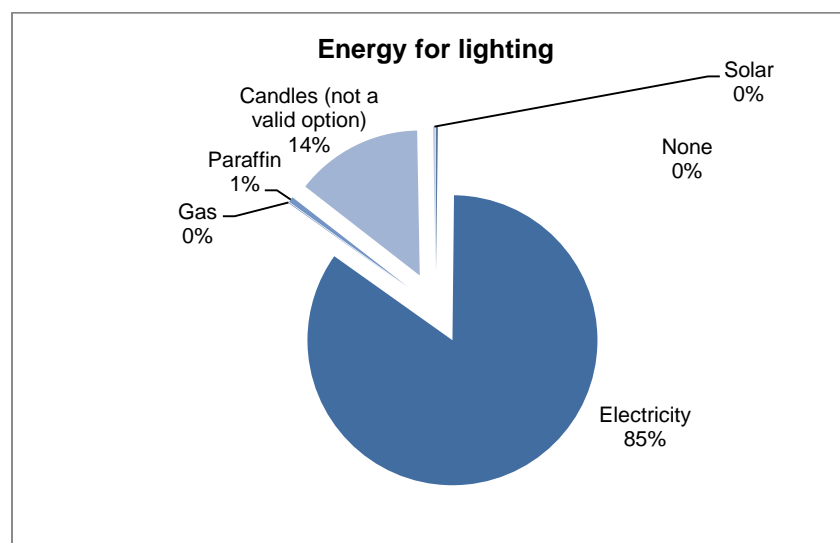
(Source: Statistics South Africa, 2001, 2007, 2011)

Figure / Table 3.27: Energy or fuel for lighting according to category and per ward

Wards	None	Electricity	Gas	Paraffin	Candles (not a valid option)	Solar
FS193: Nketoana	30	14661	11	106	2459	50
Ward 1	-	1785	-	3	136	5
Ward 2	3	1716	2	7	142	-
Ward 3	5	2035	-	9	120	4
Ward 4	2	1495	3	7	252	4
Ward 5	5	1328	-	17	391	13
Ward 6	2	1390	1	20	444	12
Ward 7	6	1806	3	4	291	3
Ward 8	1	1461	-	4	56	-
Ward 9	6	1645	3	35	629	8

(Source: Statistics South Africa, Census, 2011)

Figure / Table 3.28: Energy or fuel for lighting



(Source: Statistics South Africa, Census, 2011)

Figure / Table 3.29: Situation Analysis, Electricity

Status Quo:	Refer to the Tables below
Areas without access to electricity or other forms of energy	<ul style="list-style-type: none"> The Mabena Section in Arlington still does not have access to electricity. Eskom is directly providing electricity in Arlington. However, Eskom has confirmed a project to provide electricity to Mabena. Households affected are 375. The new extension in Ntha is still not connected to the network. A new extension of the network needs to be constructed. Households affected are 1001.
Areas with access to electricity and the reliability thereof	<ul style="list-style-type: none"> Eskom is providing electricity everywhere in the municipal area, with the exception of Reitz, Mamafubedu (Petrus Steyn), Lindley and Ntha. The provision is reliable except in Lindley and Ntha. To solve this problem the upgrading of the network is included in the budget of 2012/2013.
Other challenges	<ul style="list-style-type: none"> Ageing electricity infrastructure in Reitz and Mamafubedu (Petrus Steyn). Refurbishment of the electricity network is ongoing. Tempering with electricity infrastructure– remove illegal connections and correction at payment of re-connection fees Defaulting accounts The inadequate number of electricians is a serious risk and challenge Identification and implementation of renewable energy options
Other issues:	Electricity is distributed to households both by the municipality and Eskom. Street lighting is provided by the municipality. The communities in town ships prefer high mast lights as means of street lighting. Although regular street lights are still in operation, the municipality started with replacement by high mast lights. In the budget provision is made for a next phase of high mast lights.

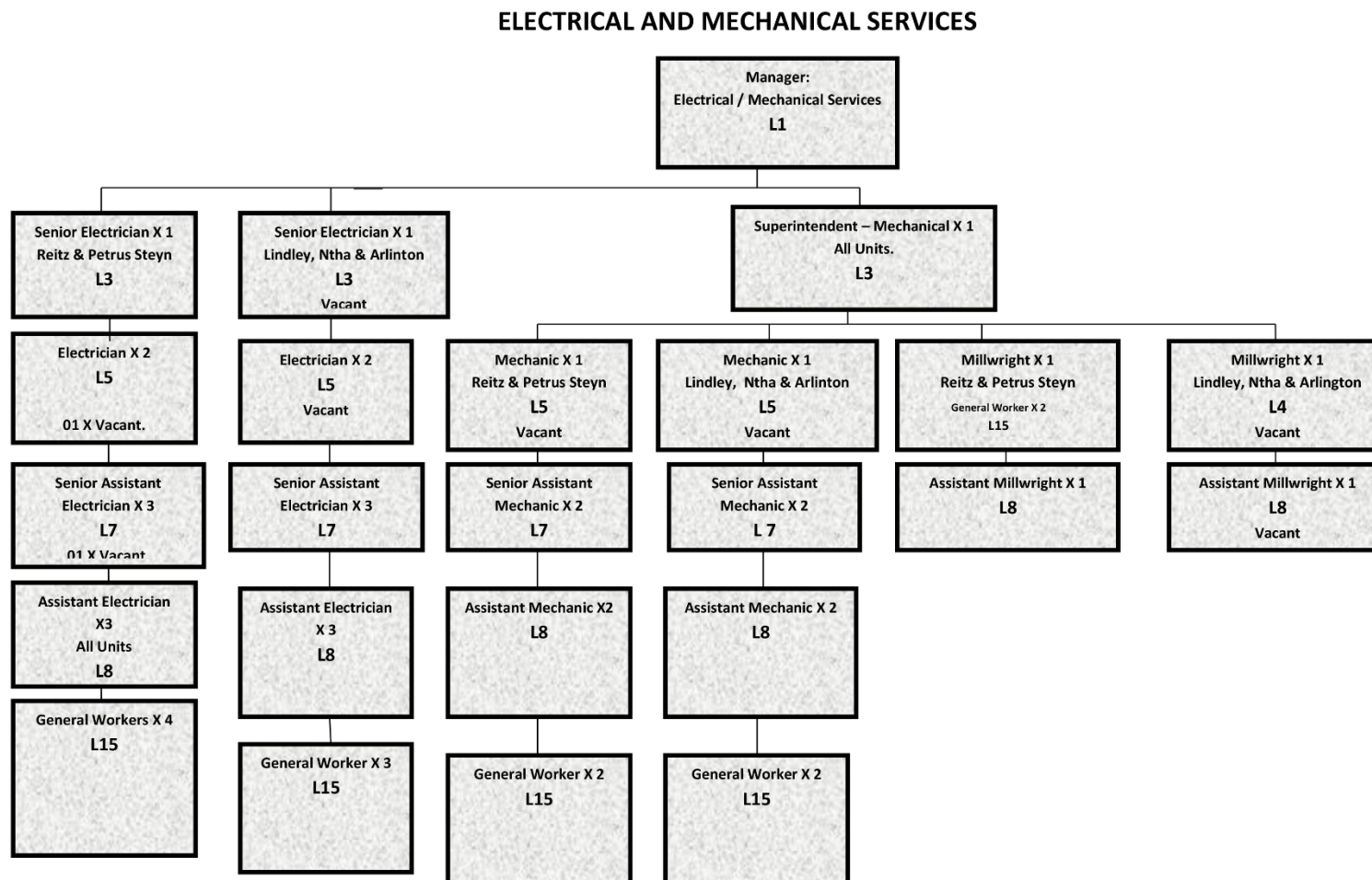
Figure / Table 3.30: Status Quo Analysis: Electricity

Energy source for lighting					Energy source for lighting (Values expressed as %)				
Ward	None	Electricity - Solar	Gas - Paraffin	Candles (not a valid option)	Ward	None	Electricity - Solar	Gas - Paraffin	Candles (not a valid option)
Ward 1	0	1,790	3	136	Ward 1	0.00%	92.79%	0.16%	7.05%
Ward 2	3	1,716	9	142	Ward 2	0.16%	91.76%	0.48%	7.59%
Ward 3	5	2,040	9	120	Ward 3	0.23%	93.84%	0.41%	5.52%
Ward 4	2	1,499	10	252	Ward 4	0.11%	85.03%	0.57%	14.29%
Ward 5	5	1,341	17	391	Ward 5	0.29%	76.45%	0.97%	22.29%
Ward 6	2	1,402	21	444	Ward 6	0.11%	75.01%	1.12%	23.76%
Ward 7	6	1,810	7	291	Ward 7	0.28%	85.62%	0.33%	13.77%
Ward 8	1	1,461	4	56	Ward 8	0.07%	95.99%	0.26%	3.68%
Ward 9	6	1,653	38	629	Ward 9	0.26%	71.07%	1.63%	27.04%

Energy source for cooking						Energy source for heating					
Ward	None	Electricity	Gas, paraffin and Solar	Wood, Coal and Animal dung	Other - Not applicable	Ward	None	Electricity - Solar	Gas - Paraffin	Wood - Coal	Candles (not a valid option) - Animal dung
Ward 1	1	1,628	92	207	-	Ward 1	70	1,268	67	520	3
Ward 2	4	1,515	66	284	-	Ward 2	235	880	58	683	12
Ward 3	5	1,929	65	172	2	Ward 3	160	1,602	75	301	36
Ward 4	3	1,368	108	283	1	Ward 4	223	908	128	436	66
Ward 5	4	1,215	177	357	-	Ward 5	96	871	82	675	29
Ward 6	-	1,044	139	686	-	Ward 6	103	840	116	788	21
Ward 7	3	1,490	138	483	1	Ward 7	68	1,267	144	623	12
Ward 8	4	1,271	74	172	-	Ward 8	99	833	69	517	5
Ward 9	4	1,370	235	717	-	Ward 9	87	946	148	1,143	1

(Source: Statistics South Africa, Census, 2011)

Figure / Table 3.31: Organogram



IDP Priority 8:	Electricity Reticulation
Strategic Objective:	To ensure that 100% of households in the Nketoana municipal area have access to electricity by 2014
Outcomes:	<ul style="list-style-type: none"> 100% of households in formal areas with access to electricity (2013/14: 1,001 to be connected in Lindley) 11 high mast lights constructed Alternative energy solutions (long-term strategy): 2013/14 Feasibility study to explore alternative sources of energy
Vote:	Electricity
Sub-function:	Electricity Distribution

Actual performance against SDBIP targets set for the 2013/14 Financial Year and comparative assessment of targets with targets set for 2013/14 and 2015/16

Ref No	Key Performance Area	IDP Priority	Vote/ Function	Key Performance Indicator			Base line	Targets								Annual Target	Performance Feedback	Proof of evidence	Reason for deviation	Remedial action	2013/14		2015/16	
				Objective	Indicator	Unit of measurement		July - Sept 2014	Actual	Oct-Dec 2014	Actual	Jan - March 2015	Actual	April-June 2015	Actual						Target	Actual	Objective/target	Target
MM 53 Tech 26		Electricity Reticulation	Electricity Electricity Distribution Connection of 627 sites in Ntha	To ensure that 100% of households in the Nketoana municipal area have access to electricity by 2014	Connection of 627 sites in Ntha in the new extension according to the requirements of the contract documentation and project specifications	482 of 627 site connections to the electricity grid completed according to quality and quantity specifications	New							482	482	482	Completed	Completion certificate			1	The project is done in phase 1. Phase 1 was completed.. The 2 nd phase will be done in the 2014/2015 financial year.	Connection of 145 sites in Ntha in the new extension according to the requirements of the contract documentation and project specifications	145

Ref No	Key Performance Area	IDP Priority	Vote/ Function	Key Performance Indicator			Base line	Tar gets							Annual Target	Performance Feedback	Proof of evidence	Reason for deviation	Remedial action	2013/14		2015/16	
				Objective	Indicator	Unit of measurement		July - Sept 2014	Actual	Oct-Dec 2014	Actual	Jan - March 2015	Actual	April-June 2015	Actual					Target	Actual	Objective/target	Target
																						Refurbishment of Reitz Main Substation	2
																						Installation of protection on Switch gear by installing 2 relays	
																						Refurbishment of Reitz Sports Ground Substation	5
																						Replacement of 5 Oil Circuit Breakers with Vacuum Creakers	
																						Replacement of 2 Auto-	2

Ref No	Key Performance Area	IDP Priority	Vote/ Function	Key Performance Indicator			Base line	Tar gets							Annual Target	Performance Feedback	Proof of evidence	Reason for deviation	Remedial action	2013/14		2015/16	
				Objective	Indicator	Unit of measurement		July - Sept 2014	Actual	Oct-Dec 2014	Actual	Jan - March 2015	Actual	April-June 2015						Target	Actual	Objective/ target	Target
																						enclosures	
																						Refurbishment of Lindley and Ntha MV Supply Lines	2
																						Ntha Extension 5 Refurbishment of Lindley and Ntha MV Supply Lines by installing 2 auto-enclosures	4

Ref No	Key Performance Area	IDP Priority	Vote/ Function	Key Performance Indicator			Baseline	Tar gets							Annual Tar get	Perfor mance Feedba ck	Proof of evide nce	Reas on for devia tion	Rem edial actio n	2013/14		2015/16	
				Objec tive	Indicato r	Unit of measur ement		July - Sep t 201 4	Act ual	O ct-De c 20 14	Act ual	Jan - Ma rch 201 5	Act ual	Ap ril-Ju ne 20 15						Act ual	Tar get	Actua l	Objecti ve/ target
																						70mm ² XPLPE cable	
																						Distanc e of 70mm ² XPLPE cable replaced	150
																						Refurbis hment of 02 11Kv supply lines to Reitz Main substati on and 1 on 11Kv supply line to Grain field Chickens Replace ment of 2 auto-enclosur es on 11Kv supply lines to Reitz main	2

Re f N o	Key Perfor mance Area	IDP Priorit y	Vote/ Funct ion	Key Performance Indicator			Base line	Tar gets							Ann ual Tar get	Perfor mance Feedba ck	Proof of eviden ce	Reas on for devia tion	Rem edial actio n	2013/14		2015/16	
				Objec tive	Indicato r	Unit of measur ement		July - Sep t 201 4	Act ual	O ct- De c 20 14	Act ual	Jan - Ma rch 201 5	Act ual	Ap ril- Ju ne 20 15						Act ual	Tar get	Actua l	Objecti ve/ target
																						substati on	
																						Replace 1 11Kv supply line to Grain field Chicken s Number of auto- enclosur es on 11Kv supply line to Grain field Chicken s replac	1
																						Infrastru cture Repairs & Mainten ance	
																						Develop ment of 1 Energy	1

Re f N o	Key Perfor mance Area	IDP Priorit y	Vote/ Funct ion	Key Performance Indicator			Base line	Tar gets							Ann ual Tar get	Perfor mance Feedba ck	Proof of evid ence	Reas on for devia tion	Rem edial actio n	2013/14		2015/16	
				Objec tive	Indicato r	Unit of measur ement		July - Sep t 201 4	Act ual	O ct- Dec 20 14	Act ual	Jan - Mar ch 201 5	Act ual	Ap ril- Ju ne 20 15						Act ual	Tar get	Actua l	Objecti ve/ target
																						Master plan to include alternati ve energy solution s for the long- term for Nketoan a	
																						Infrastru cture Repairs & Mainten ance	Daily accor ding to week ly plan
																						Frequen cy of repairs and mainten ance	

IDP Priority 8:	Electricity Reticulation
Strategic Objective:	To ensure that 100% of households in the Nketoana municipal area have access to electricity by 2014
Outcomes:	<ul style="list-style-type: none"> 100% of households in formal areas with access to electricity (2013/14: 1,001 to be connected in Lindley) 11 high mast lights constructed Alternative energy solutions (long-term strategy): 2013/14 Feasibility study to explore alternative sources of energy
Vote:	Electricity
Sub-function:	Street Lighting

Actual performance against SDBIP targets set for the 2013/14 Financial Year and comparative assessment of targets with targets set for 2013/14 and 2015/16

Ref No	Key Performance Area	IDP Priority	Vote/ Function	Key Performance Indicator			Baseline	Targets								Annual Target	Performance Feedback	Proof of evidence	Reason for deviation	Remedial action	2013/14		2015/16	
				Objective	Indicator	Unit of measurement		July - Sept 2014	Actual	Oct-Dec 2014	Actual	Jan-March 2015	Actual	April-June 2015	Actual						Target	Actual	Objective/target	Target
MM 55 Tech 28			Electricity Street Lighting		Petsana : 4 Highmast Lights	4 high mast lights constructed	New (Project)					4	Construction completed			4	Construction completed, connection to the grid to be done in next financial year				4	4	Repairs & Maintenance of street lights according to the weekly plan Frequency of repairs and	Daily according to weekly plan

Ref No	Key Performance Area	IDP Priority	Vote/ Function	Key Performance Indicator			Baseline	Tar gets								Annual Target	Performance Feedback	Proof of evidence	Reason for deviation	Remedial action	2013/14		2015/16	
				Objective	Indicator	Unit of measurement		July - Sept 2014	Actual	Oct-Dec 2014	Actual	Jan-March 2015	Actual	April-June 2015	Actual						Target	Actual	Objective/target	Target
																							maintenance	
MM 56 Tech 29					Ntha: 3 Highmast Lights	3 high mast lights constructed	New (Project)					3	Construction completed			3	Construction completed, connection to the grid to be done in next financial year				3	3		
MM 57 Tech 30					Mamafubedu: 3 Highmast Lights	3 high mast lights constructed	New (Project)					3	Construction completed			3	Construction completed, connection to the grid to be done in next financial year				3	3		
MM 58 Tech 31					Arlington: 1 Highmast Lights	1 high mast lights constructed	New (Project)					1	Construction completed			1	Construction completed, connection to the grid to be done in next financial year				3	3		

Ref No	Key Performance Area	IDP Priority	Vote/ Function	Key Performance Indicator			Baseline	Tar gets							Annual Target	Performance Feedback	Proof of evidence	Reason for deviation	Remedial action	2013/14		2015/16	
				Objective	Indicator	Unit of measurement		July - Sept 2014	Actual	Oct-Dec 2014	Actual	Jan-March 2015	Actual	April-June 2015						Target	Actual	Objective/target	Target
MM 59 Tech 32					Identify viable alternative energy solutions, given the unique circumstances of the Nketoana municipality	Compilation of an Energy Master Plan that will include alternative energy solutions	New						1	Tender advertised	1	Not completed yet. SC process initiated to procure service provider to compile the plan	SC documentation			Identification of alternative energy solutions	0		



3.4 Waste Management

Figure / Table 3.32: Waste Removal: Nketoana, Thabo Mafutsanyana and RSA

Category	Nketoana	Refuse removal as a %: Nketoana	Thabo Mafutsanyana	Refuse removal as a %: Thabo Mafutsanyana	RSA	Refuse removal as a %: RSA
Removed by local authority/private company at least once a week	12506	72%	107125	49%	8972934	62%
Removed by local authority/private company less often	262	1%	2042	1%	218302	2%
Communal refuse dump	545	3%	8245	4%	271787	2%
Own refuse dump	3225	19%	86680	40%	4075939	28%
No rubbish disposal	682	4%	12254	5%	781999	5%
Other	97	1%	1539	1%	129201	1%

(Source: Census 2011)

Figure / Table 3.33: Waste Removal: 2001-2011

Census 2001 **Community Survey 2007** **Census 2011**

	Total house-holds	% of house-holds		Total house-holds	% of house-holds		Total house-holds	% of house-holds
Removed by local authority at least once a week	9591	64%		10533	63%		12506	72%
Removed by local authority less often	243	2%		316	2%		262	1%
Communal refuse dump	371	2%		100	1%		545	3%
Own refuse dump	3276	22%		4020	24%		3225	19%
No rubbish disposal	1557	10%		1729	10%		682	4%
Not applicable	3	0%		51	0%		97	1%
Total	15039			16748			17317	

(Source: StatsSA)

Figure / Table 3.34: Waste Removal according to category and per ward

	Removed by local authority/private company at least once a week	Removed by local authority/private company less often	Communal refuse dump	Own refuse dump	No rubbish disposal	Other
FS193: Nketoana	12506	262	545	3225	682	97
Ward 1	1481	1	82	321	34	8
Ward 2	1730	8	20	84	20	7
Ward 3	1929	8	-	149	84	4
Ward 4	1252	3	42	384	51	31
Ward 5	1204	17	10	448	46	27
Ward 6	805	14	74	794	177	5
Ward 7	1367	31	21	546	136	12
Ward 8	1339	94	1	32	56	-
Ward 9	1399	85	295	467	78	3

(Source: StatsSA)

Figure / Table 3.35: Waste Removal

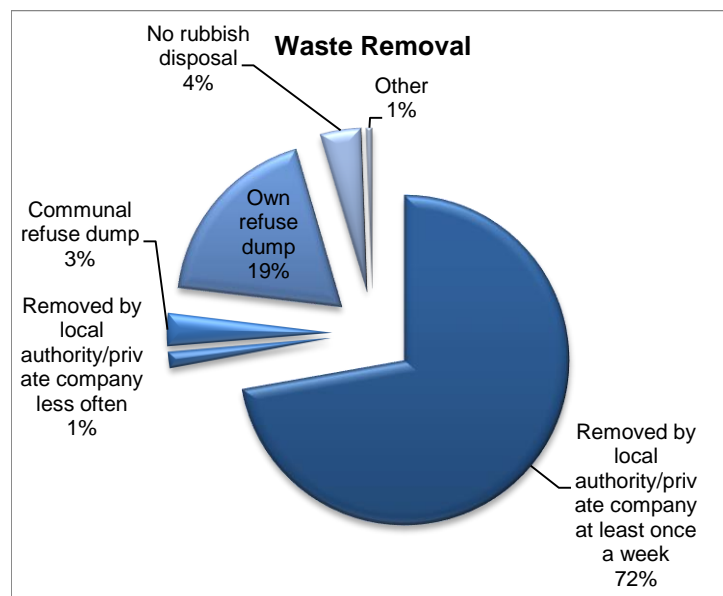


Figure / Table 3.36: Status Quo Analysis: Refuse Removal

Status Quo: ¹	Ward	RDP and above	Below RDP	No rubbish disposal	Other - Not applicable	Ward	RDP and above	Below RDP	No rubbish disposal	Other - Not applicable
	Ward 1	1,482	403	34	8	Ward 1	76.91%	20.91%	1.76%	0.42%
	Ward 2	1,738	104	20	7	Ward 2	92.99%	5.56%	1.07%	0.37%
	Ward 3	1,938	149	84	4	Ward 3	89.10%	6.85%	3.86%	0.18%
	Ward 4	1,255	426	51	31	Ward 4	71.19%	24.16%	2.89%	1.76%
	Ward 5	1,221	459	46	27	Ward 5	69.65%	26.18%	2.62%	1.54%
	Ward 6	819	868	177	5	Ward 6	43.82%	46.44%	9.47%	0.27%
	Ward 7	1,398	567	136	12	Ward 7	66.16%	26.83%	6.44%	0.57%
	Ward 8	1,433	33	56	0	Ward 8	94.15%	2.17%	3.68%	0.00%
	Ward 9	1,484	762	78	3	Ward 9	63.77%	32.75%	3.35%	0.13%
General:	Refuse removal services is classified as satisfactory in some areas, but not in all									
Residential sites:	All residential as well as businesses have access to refuse removal services. Residential areas have a service once a week. All the urban areas are serviced, with refuse removal on a weekly basis. Effective co-ordination of this service enhance the functioning of the thereof.									
Business sites:	Businesses are serviced twice per week if necessary.									
Resource consideration:	<ul style="list-style-type: none"> The equipment used for removal (mostly a tractor and trailer) are old and in poor condition. The procurement of compactor trucks enhanced the service and it is more effectively rendered now. In the budget provision is made for the procurement of a waste compactor. It will prolong the life of landfill sites. Resources are generally adequate to support current waste disposal requirements. 									
Indicate all areas or settlements without access in terms of the basic service standards and provide reasons for lack of service	<ul style="list-style-type: none"> Each of the urban units has one waste disposal site, excluded Arlington. Waste transfer center in Arlington is licensed. The capacity and condition of the site in Mamafubedu (Petrus Steyn) needs urgent attention. It reached its capacity and needs to be closed down and a new site needs to be developed. The present site will be properly rehabilitated after closing down. Two landfill sites have been licensed. 									
Recycling:	The recycling of waste can be utilized much more as an instrument for job creation. The impact that proper waste recycling can have on the environment must not be underestimated. The LED section of the municipality is making an effort to utilize recycling to the utmost and involve the community to drive the process. With the development of the new Landfill site in Reitz recycling was put as part of the requirements in the tender document.									
Indicate other challenges that are not highlighted above	<ul style="list-style-type: none"> Illegal dumping takes place and it is a challenge to stop it. Most towns experience problems with the management of their waste disposal sites, and do not adhere to the requirements of the Department of Water Affairs. 									
Waste Disposal:	<ul style="list-style-type: none"> One landfill site is not licensed or registered and is too close to residential areas, which creates a health hazard 									

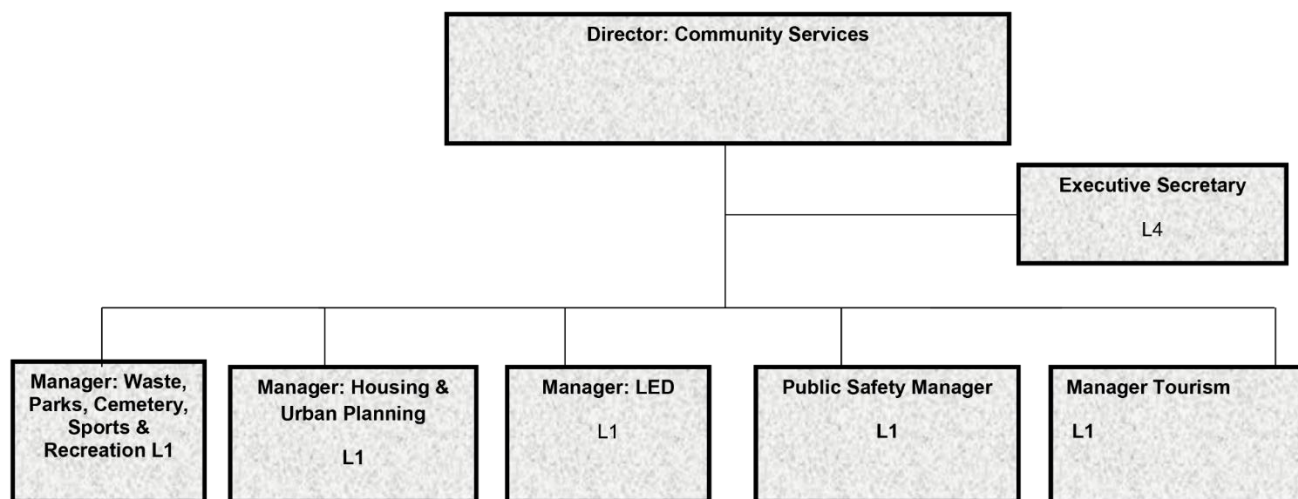
¹ Source of statistics: (StatsSA, 2011): Wards 1 and 2=Mamafubedu (Petrus Steyn); Ward 3 and 4 = Lindley/Ntha; Ward 5=Arlington/Leratswana and Ward 6-9 = Reitz and Petsana

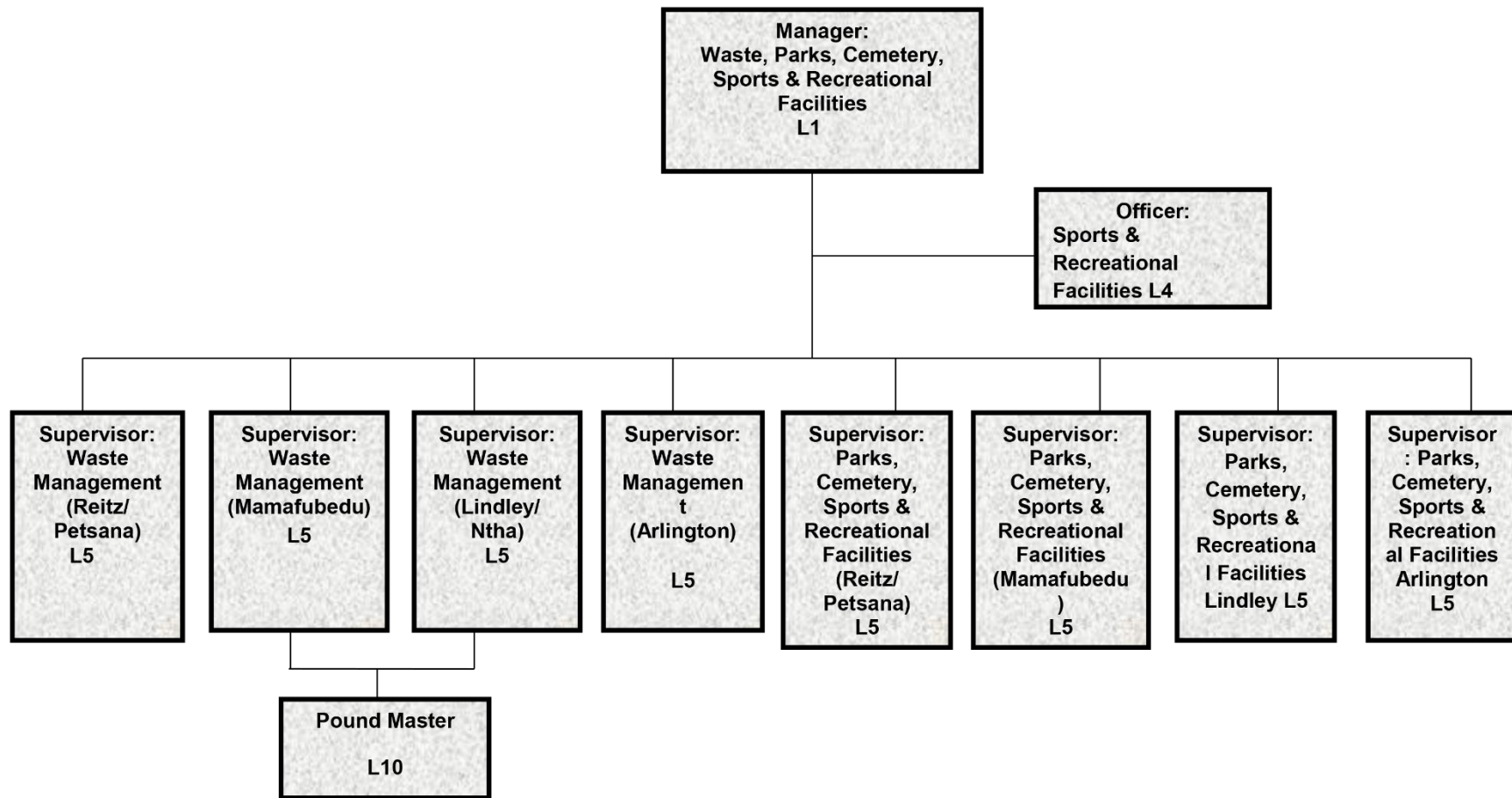
Figure / Table 3.37: Summary of Refuse Handling Capacity

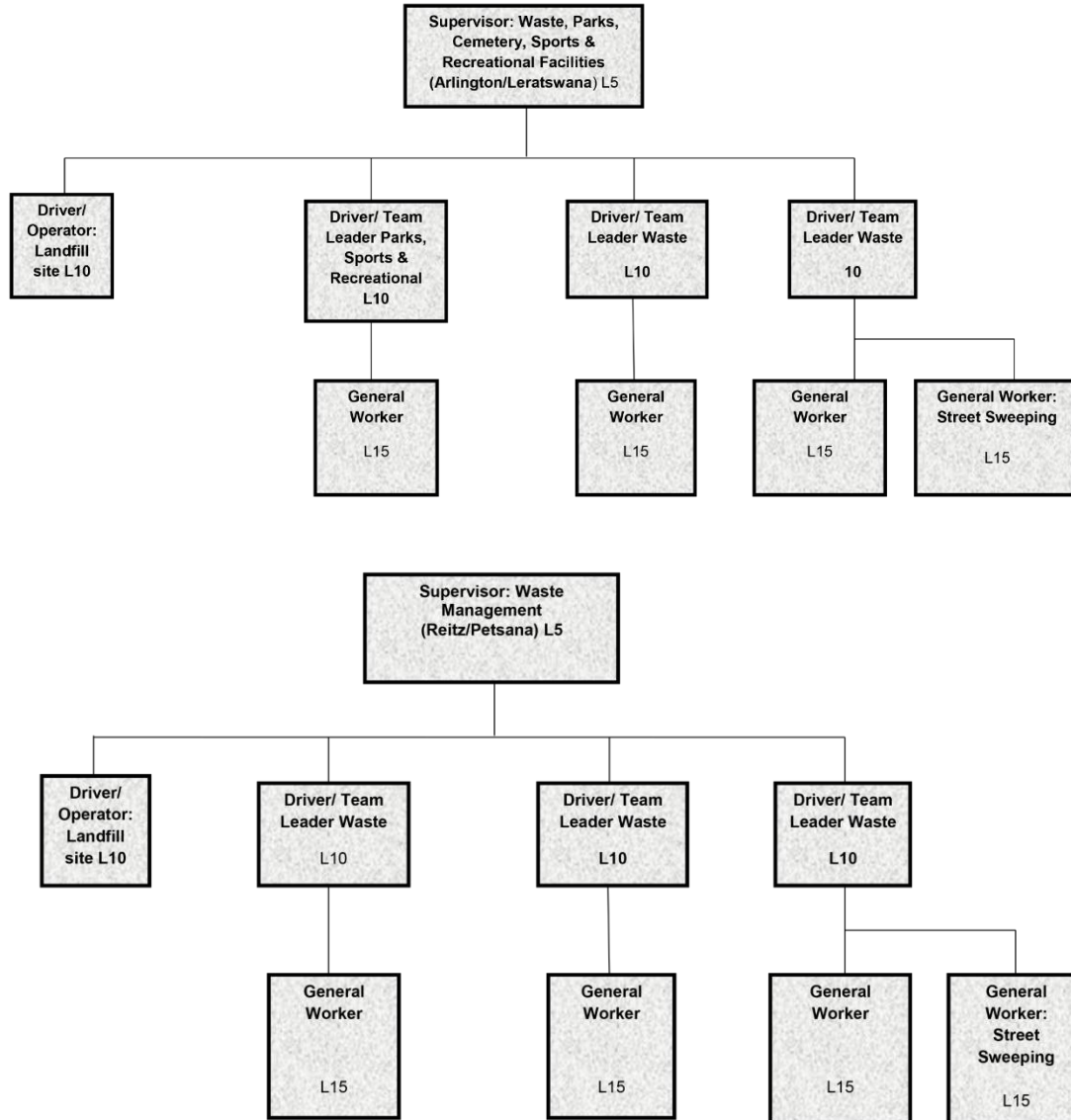
Area	Number of landfill sites	Legal Status	Frequency of refuse removals	Equipment
Reitz/Petsana	1	Legal	Once per week	1 Compactor Truck 2 Tractors with Trailers
Mamafubedu (Petrus Steyn)	1	Not legal	Once per week	2 Tractors with Trailers
Lindley/ Ntha	1	Legal	Once per week	2 Tractors with trailers
Arlington/Leratswana	0 Waste is transferred to Lindley. A transfer station is under development		Once per week	1 Tractor with trailer

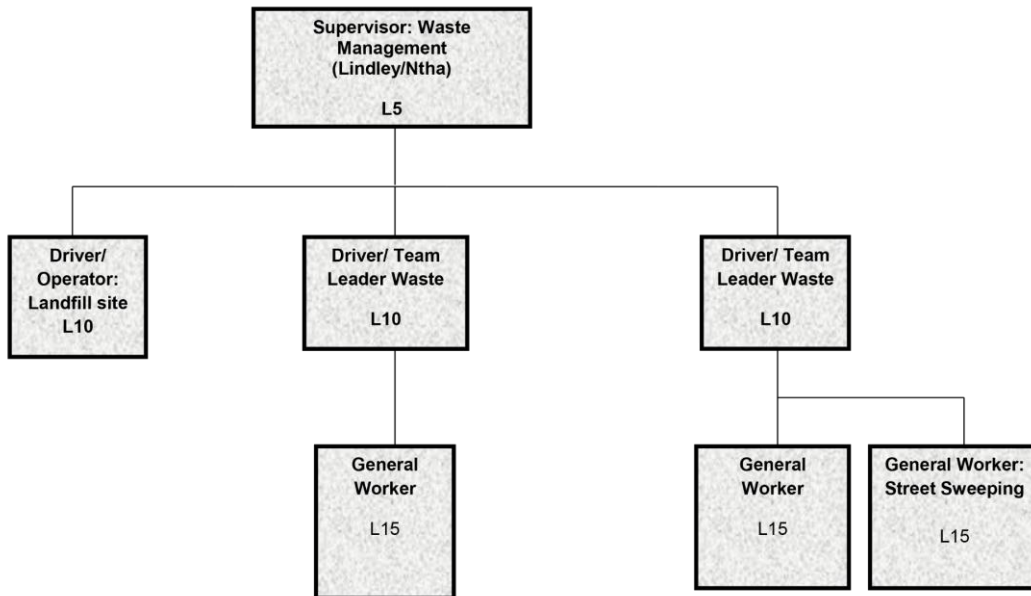
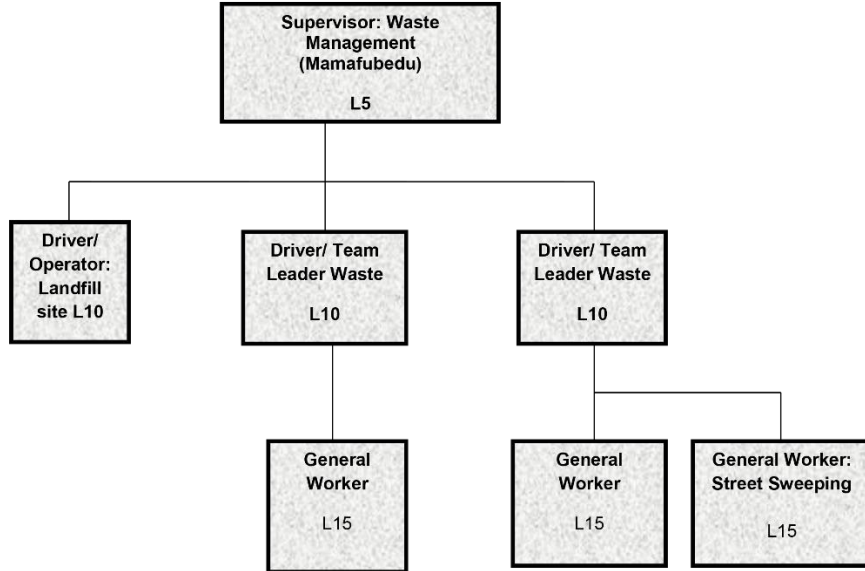
Figure / Table 3.38: Organogram

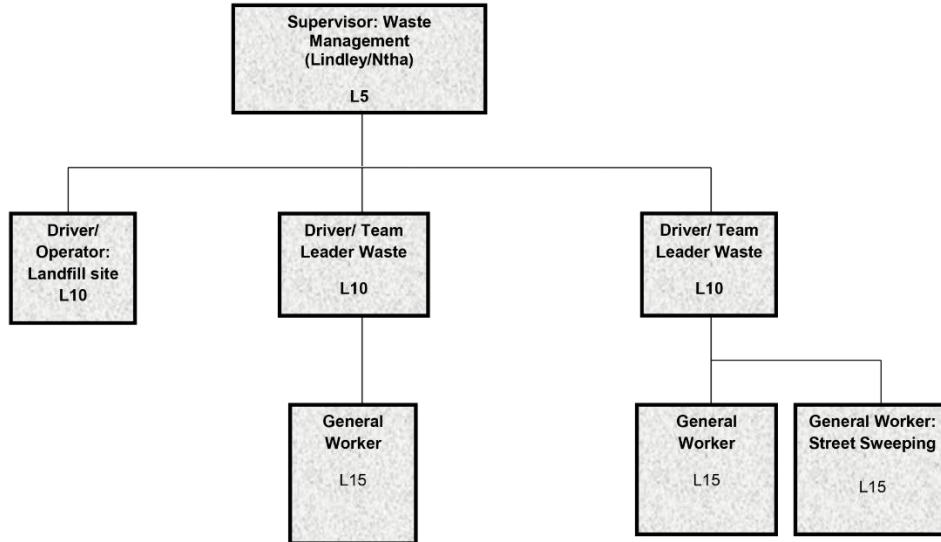
DIRECTORATE OF COMMUNITY SERVICES











IDP Priority 7:	Refuse Removal
Strategic Objective:	To ensure that all households in urban areas have access to waste removal according to waste removal standards and good waste management in the municipal area
Outcomes:	<ul style="list-style-type: none"> Licensed and registered landfill sites Improving internal capacity for efficiency waste removal Mamafubedu dumping site closed and rehabilitated
Vote:	Waste Management
Sub-function:	Solid Waste

Actual performance against SDBIP targets set for the 2013/14 Financial Year and comparative assessment of targets with targets set for 2013/14 and 2015/16

R ef N o	Key Perfor mance Area	IDP Prio rity	Vote/ Functi on	Key Performance Indicator			Base line	Tar gets							Ann ual Tar get	Perfor mance Feedba ck	Proo f of evid ence	Reas on for devia tion	Reme dial actio n	2013/14		2015/16	
				Objecti ve	Indicato r	Unit of measur ement		July - Sep t 201 4	Act ual	O ct- De c 20 14	Act ual	Jan - Mar ch 201 5	Act ual	Ap ril- Ju ne 20 15	Act ual					Tar get	Actual	Objecti ve/ target	Tar get
M M 10 C o m 10		Refu se Rem oval	Waste Manag ement/ Solid Waste	To ensure that all householders in urban areas have access to waste removal according to waste removal standards and good waste management in the municipal area	Purchasing of a waste compact or truck	Number of waste compact or trucks purchased	New							1	0	1	Not achieved	Serious cash flow challenges prevented this to be completed	This must be prioritized for the coming financial year to ensure acceptable standard of service to be rendered	1	Due to financial constraints it was not done yet. To receive attention in 2014/2015. The possibility of leasing the vehicle is investigated. The rendering of services is at this stage not affected.	Number of waste compact or trucks purchased	1
M M 11 C o m 11			Waste Manag ement/ Solid Waste		<i>Rehabilitation of Mamfubedu disposal site according to the requirements of the</i>	Number of illegal dumping sites closed and rehabilitated	New							1	0	1	It was not achieved	The serious cash flow challenge kept this from been	The dumping site poses a health risk for the residents	1	0	<i>Rehabilitation of Mamfubedu disposal site according to the requirements of the</i>	1

Ref No	Key Performance Area	IDP Priority	Vote/ Function	Key Performance Indicator			Baseline	Targets								Annual Target	Performance Feedback	Proof of evidence	Reason for deviation	Remedial action	2013/14		2015/16	
				Objective	Indicator	Unit of measurement		July - Sept 2014	Actual	Oct-Dec 2014	Actual	Jan - March 2015	Actual	April-June 2015	Actual						Target	Actual	Objective/ target	Target
			Rehabilitation of Mamfu bedu disposa l site		contract documentation and project specifications														completed	and must be prioritized in the coming financial year. Funds were sourced from DETE A.			contract documentation and project specifications	

IDP Priority 7:	Refuse Removal
Strategic Objective:	To ensure that all households in urban areas have access to waste removal according to waste removal standards and good waste management in the municipal area
Outcomes:	100% of households in formal areas with access to refuse removal services at basic acceptable national standards
Vote:	Waste Management
Sub-function:	Solid Waste

Actual performance against SDBIP targets set for the 2013/14 Financial Year and comparative assessment of targets with targets set for 2013/14 and 2015/16

Ref No	Key Performance Area	IDP Priority	Vote/ Function	Key Performance Indicator			Baseline	Targets								Annual Target	Performance Feedback	Proof of evidence	Reason for deviation	Remedial action	2013/14		2015/16	
				Objective	Indicator	Unit of measurement		July-Sept 2014	Actual	Oct-Dec 2014	Actual	Jan-March 2015	Actual	April - June 2015	Actual						Target	Actual	Objective/target	Target
MM12 Community		Refuse Removal	Waste Management/ Solid Waste	To ensure that all household refuse removal in urban areas have access to waste removal according to waste removal standards and good waste management in the municipal area	Weekly refuse removal to households in formal settlement sites Standard: Weekly at all residential sites and bi-weekly at business sites (14,000 sites in all)	Frequency of waste disposal at residential and business sites	Weekly at residential sites and bi-weekly at business sites (14,000 sites)	Weekly at residential sites and bi-weekly at business sites (14,000 sites)	Weekly at residential sites and bi-weekly at business sites (14,000 sites)	Weekly at residential sites and bi-weekly at business sites (14,000 sites)	Weekly at residential sites and bi-weekly at business sites (14,000 sites)	Weekly at residential sites and bi-weekly at business sites (14,000 sites)	Weekly at residential sites and bi-weekly at business sites (14,000 sites)	Weekly at residential sites and bi-weekly at business sites (14,000 sites)	Weekly at residential sites and bi-weekly at business sites (14,000 sites)	Weekly at residential sites and bi-weekly at business sites (14,000 sites)	Weekly at residential sites and bi-weekly at business sites (14,000 sites)	The refuse removal is done regularly as per schedule: Weekly at residential sites Bi-weekly at business sites	Monthly report Operational plan Schedule Job cards		Weekly at residential sites and bi-weekly at business sites (14,000 sites)	Weekly at residential sites and bi-weekly at business sites (14,000 sites)	Weekly refuse removal to households in formal settlement sites Standard: Weekly at all residential sites and bi-weekly at business sites (14,000 sites in all)	Weekly at residential sites and bi-weekly at business sites (14,000 sites)

IDP Priority 7:	Refuse Removal
Strategic Objective:	To ensure that all households in urban areas have access to waste removal according to waste removal standards and good waste management in the municipal area
Outcomes:	Refuse bins distributed to all households in urban areas
Vote:	Waste Management
Sub-function:	Solid Waste

Actual performance against SDBIP targets set for the 2013/14 Financial Year and comparative assessment of targets with targets set for 2013/14 and 2015/16

Ref No	Key Performance Area	IDP Priority	Vote/ Function	Key Performance Indicator			Base line	Targ ets							Ann ual Tar get	Perfor mance Feedba ck	Proo f of evide nce	Reas on for deviat ion	Rem edial actio n	2013/14		2015/16	
				Objecti ve	Indica tor	Unit of measur ement		July - Sept 2014	Act ual	Oct- Dec 2014	Act ual	Jan - March 2015	Act ual	Apri l- June 2015						Targe t	Act ual	Objec tive/ target	Tar get
MM13 Com13		Refuse Removal	Waste Management/ Solid Waste	To ensure that all households in urban areas have access to waste removal according to waste removal standards and good waste management in the	90 liters refuse bins distributed to households in urban areas	Units of refuse bins distributed	14,000							2,000 (16,000 in total)	2,000 (16,000 in total)	Not achieved No dustbins were distributed		Due to financial constraints	The matter must be prioritized in the coming financial year	14,000 refuse bins distributed	0	90 liters refuse bins distributed to households in urban areas	2,000 (16,000 in total)

Ref No	Key Performance Area	IDP Priority	Vote/ Function	Key Performance Indicator			Baseline	Targets							Annual Target	Performance Feedback	Proof of evidence	Reason for deviation	Remedial action	2013/14		2015/16	
				Objective	Indicator	Unit of measurement		July - Sept 2014	Actual	Oct - Dec 2014	Actual	Jan - March 2015	Actual	April - June 2015						Target	Actual	Objective/target	Target
				municipal area																			



3.5 Housing

2.1 Analysis of Access to Basic Services: 2001-2011

Figure / Table 3.39: Analysis of Access to Dwellings: 2001, 2007, 2011

	Census 2001	CS 2007	Census 2011
House or brick structure on a separate stand or yard	55.3%	56.4%	71.3%
Traditional dwelling /hut / structure made of traditional materials	16.1%	5.9%	3.8%
Flat in block of flats	0.3%	0.6%	0.7%
Town / cluster / semi-detached house (simplex: duplex: triplex)	0.4%	0.4%	0.1%
House / flat / room in back yard	1.1%	1.4%	0.9%
Informal dwelling/s shack in backyard	5.2%	6.7%	13.6%
Informal dwelling/s shack NOT in backyard e.g. in an informal / squatter settlement	21.0%	25.2%	8.8%
Room / flatlet not in back yard but on a shared property	0.6%	1.8%	0.1%
Caravan or tent	0.1%	-	0.1%
Workers' hostel(bed / room)	-	0.2%	0.0%
Other	-	1.4%	0.6%
Total	100.0%	100.0%	100.0%

(Source: StatsSA, 2001, 2007, 2011)



Figure / Table 3.40: Service Delivery trends (Basic Services)

	Census 2001		Community Survey 2007		Census 2011	
	Total dwellings	Type of dwelling as %	Total dwellings	Type of dwelling as %	Total dwelling	Type of dwelling as %
House or brick structure on a separate stand or yard	8240	55%	9448	56%	12355	71%
Traditional dwelling/hut/structure made of traditional materials	2400	16%	983	6%	655	4%
Flat in block of flats	43	0%	100	1%	112	1%
Town/cluster/semi-detached house (simplex: duplex: triplex)	53	0%	61	0%	11	0%
Semi-detached house					50	0%
Townhouse (semi-detached house in a complex)					18	0%
House/flat/room in back yard	167	1%	236	1%	163	1
Informal dwelling/shack in back yard	771	5%	1127	7%	2351	14
Informal dwelling/shack NOT in back yard e.g. in an informal/squatter settlement	3123	21%	4214	25%	1528	9
Room/flatlet not in back yard but on a shared property	82	1%	303	25%	25	0%
Caravan or tent	22	0%	0	0%	12	0%
Private ship/boat	3	0%	0	0%		
Workers' hostel (bed/room)			38	0%		
Tourist hotel/motel	0	0%				
Hospital/medical facility/clinic/frail care centre	4	0%				
Childcare institution/orphanage	0	0%				
Home for the disabled	0	0%				
Boarding school hostel	3	0%				
Initiation school	0	0%				
Convert/monastery/religious retreat	0	0%				
Defence force barracks/camp/ship in harbour	3	0%				
Prison/correctional institution/police cells	4	0%				
Community or church hall	0	0%				
Refugee camp/shelter for the homeless	0	0%				
Homeless	3	0%				
Other	0	0%	239	2%	37	0%
Not applicable	120	1%				
Total	15039		16748		17317	

(Source: StatsSA)

Figure / Table 3.41: Dwelling according to Wards in Nketoana

	House or brick/concrete block structure on a separate stand or yard or on a farm	Traditional dwelling/hut/structure made of traditional materials	Flat or apartment in a block of flats	Cluster house in complex	Townhouse (semi-detached house in a complex)	Semi-detached house	House/flat/room in backyard	Informal dwelling (shack; in backyard)	Informal dwelling (shack; not in backyard; e.g. in an informal/settlement or on a farm)	Room/flatlet on a property or larger dwelling/servants quarters/granny flat	Caravan/tent	Other
FS193: Nketoana	12355	655	112	11	18	50	163	2351	1528	25	12	37
Ward 1	1661	19	9	-	1	1	13	172	41	-	7	2
Ward 2	1070	11	24	4	2	13	6	359	377	-	-	3
Ward 3	1478	48	12	-	4	16	8	434	164	-	1	7
Ward 4	1212	118	9	6	1	4	2	343	55	6	-	7
Ward 5	1327	104	6	-	1	4	11	182	113	2	-	4
Ward 6	1363	163	23	1	1	3	23	187	89	7	2	8
Ward 7	1713	178	11	-	6	7	55	73	56	11	1	4
Ward 8	1264	7	7	-	-	-	18	189	35	-	-	1
Ward 9	1267	7	12	-	1	3	27	411	597	-	1	-

(Source: StatsSA)

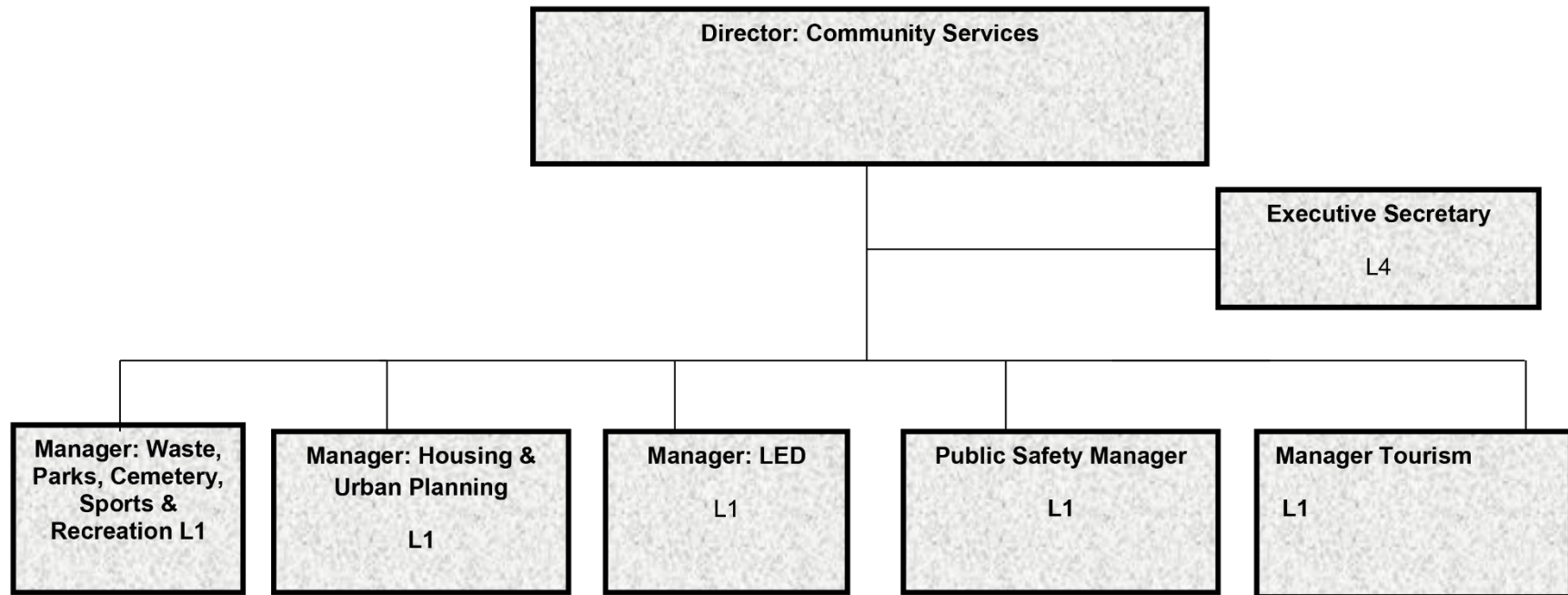
Figure / Table 3.42: Housing – Census 2011

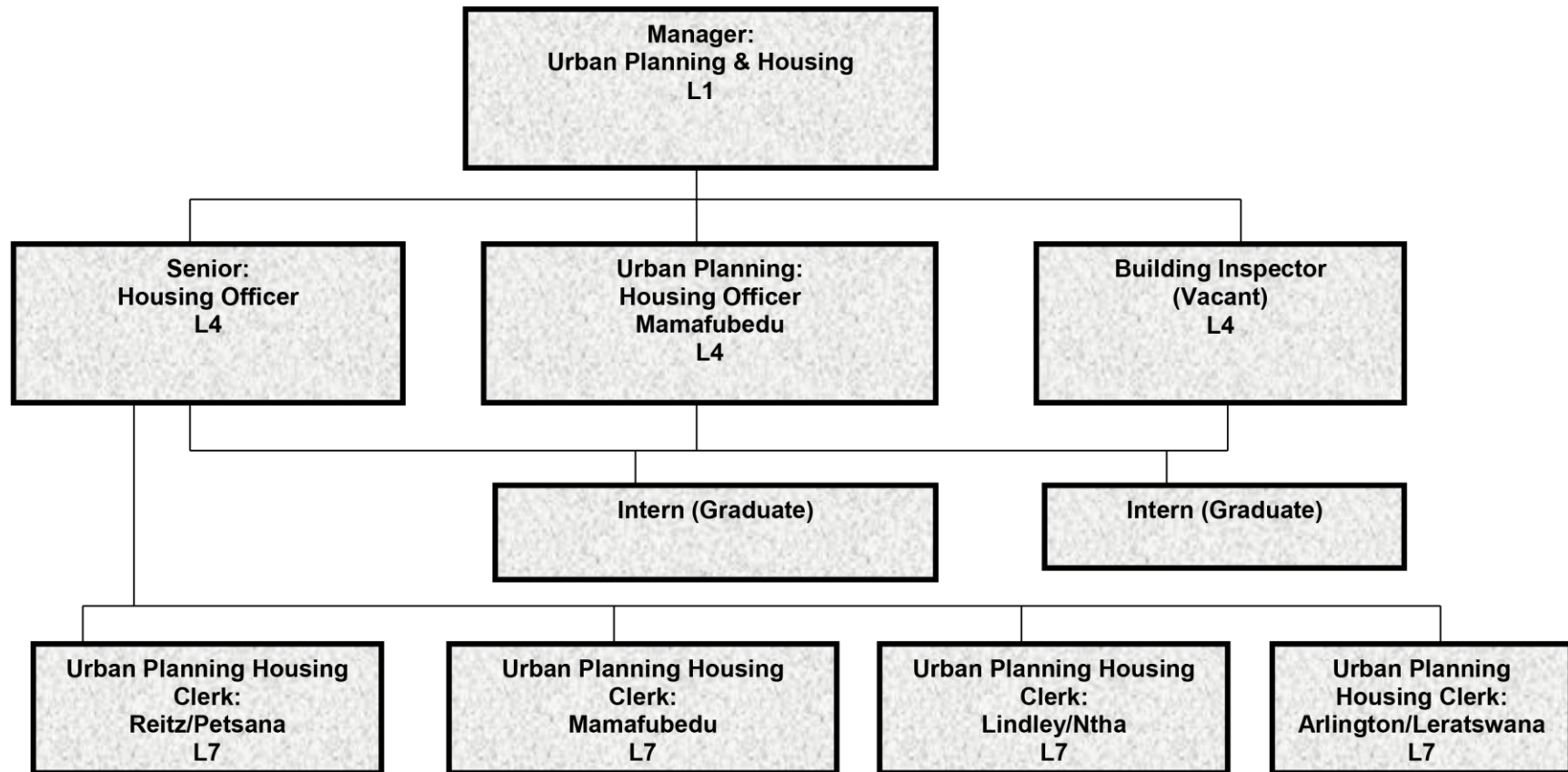
Category	Unit of measurement	Y2001	Y2011
Persons	Number of Persons	61950	60324
Households	Number of households	15039	17318
Average household size	Number of persons/house	4.11	3.48
Female headed households	Percentage / households	40% (5975 of 15039)	41% (7056 of 17318 households)
Formal dwellings	Percentage / households	73% (10953 of 15039)	77% (13390 of 17318)
Informal dwellings	Percentage/ households	27% (4086 of 15039)	23% (3928 of 17318)

(Source: StatsSA)

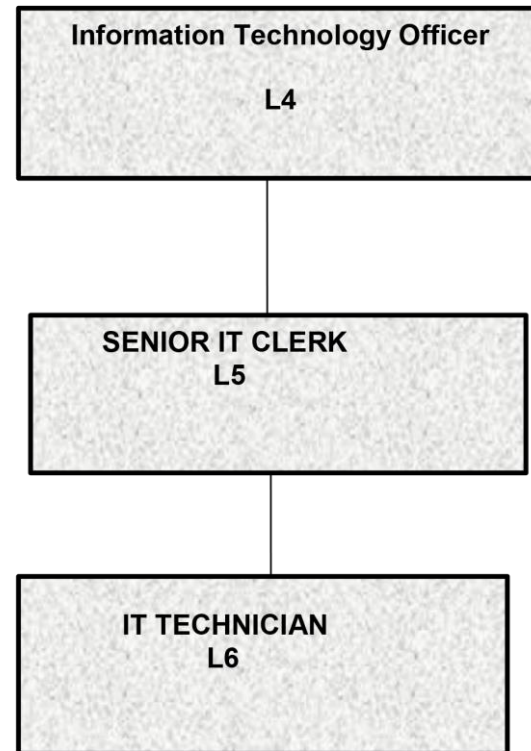
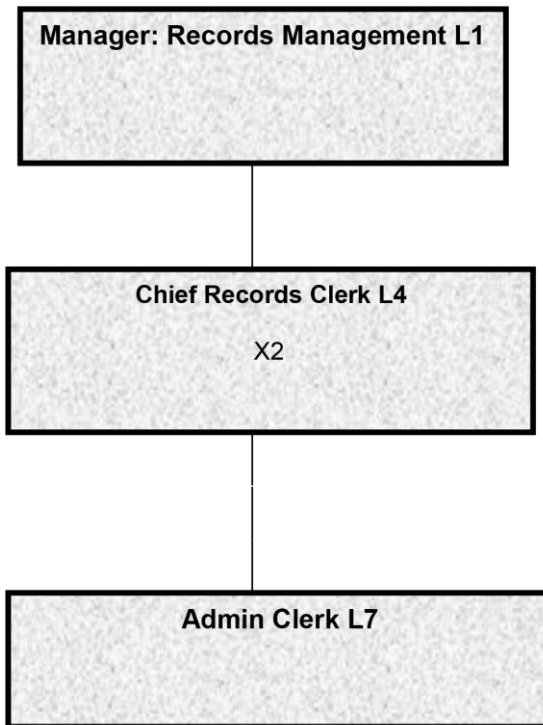
Figure / Table 3.43: Organogram

DIRECTORATE OF COMMUNITY SERVICES





RECORDS MANAGEMENT



IDP Priority 4:	Urban Planning
Strategic Objective:	To ensure an effective Urban Planning that will promote proper spatial planning to address sustainable development and social cohesion
Outcomes:	<ul style="list-style-type: none"> • Review the SDF to ensure credibility that will be approved by Council by the closing of the 2014/15 financial year • Compilation of a housing sector plan that will be approved by Council by the closing of the 2014/15 financial year • New township establishment[s] according to the SDF • Consolidation of erven • Housing demand database
Vote:	Planning and Development
Sub-function:	Not Required

Actual performance against SDBIP targets set for the 2013/14 Financial Year and comparative assessment of targets with targets set for 2013/14 and 2015/16

R ef N o	Key Perfor mance Area	IDP Prio rity	Vote/ Funct ion	Key Performance Indicator			Bas eline	Tar get s							Annua l Target	Perfor mance Feedb ack	Pro of of evid ence	Reas on for deviat ion	Reme dial action	2013/14		2015/16		
				Objec tive	Indicato r	Unit of meas urement		Jul y- Se pt 201 4	Ac tua l	O ct - D ec 20 14	Ac tua l	Jan- Marc h 2015	Ac tua l	April- June 2015						Ac tua l	Target	Act ual	Objectiv e/ target	Targe t
M M 1 C o m 1	Basic Service Delivery	Urban Plannin g	Planni ng and Devel opme nt	To ensur e an effe ctive Urban Planni ng that will pro mote proper spatial planni ng to ad dress sustain able de velopm ent and social cohesi on	Review of the SDF to ensure complian ce with SPLUMA	Num ber of credi ble SDF's devel oped and appro ved	1 (Not com plian t)							1	0	1 (Comp liant)	The current docum ent is outdat ed.		No budge t availa ble.	The depart ment of Rural Devel opme nt is going to assist the Munici pality with the compil ation during 2015/ 16 Finan cial year	1 (Comp liant)	0	Number of complia nt SDF's develop ed and approve d	1 (Comp liant)
M M 2 C o m 2					Compilat ion of a housing sector plan that complies with the Housing Code	Num ber of housi ng secto r plans appro ved	0					1	1 Dr aft		1	1 Draft awaitin g Counci l approv al		Submi tted for appro val by EXCO , not appro ved by Counc	To be submi tted for Counc il appro val in the next financi	1 per nit = 4	1 per nit = 4	1	1	

Ref No	Key Performance Area	IDP Priority	Vote/ Function	Key Performance Indicator			Baseline	Targets							Annual Target	Performance Feedback	Proof of evidence	Reason for deviation	Remedial action	2013/14		2015/16		
				Objective	Indicator	Unit of measurement		July-Sept 2014	Actual	October-Dec 2014	Actual	Jan-March 2015	Actual	April-June 2015						Actual	Target	Actual	Objective/target	Target
																	il as yet	al year						
MM3 Comm3					New Township establishment at Port Arlington (Division of farm Port Arlington and the establishment of a new township on the division) Performance Level Agreement: Township approval Survey – General approval Environmental Impact Assessment	Number of township establishments established								1	1 Draft	1	The plan was compiled by service provider and the Draft is available. The document must still be approved by Council	Copy of the draft document	Submitted to Department of COGTA, awaiting approval	Follow up from COGTA	1 per new township establishment (= 3)	To be assisted by Internal Audit. Not achieved yet, Move to 4 th quarter	Number of township establishments established. Progress reports per quarter towards township establishment	14 reports

Ref No	Key Performance Area	IDP Priority	Vote/ Function	Key Performance Indicator			Baseline	Targets							Annual Target	Performance Feedback	Proof of evidence	Reason for deviation	Remedial action	2013/14		2015/16		
				Objective	Indicator	Unit of measurement		July-Sept 2014	Actual	Oct-Dec 2014	Actual	Jan-March 2015	Actual	April-June 2015						Actual	Target	Actual	Objective/ target	Target
					Opening of Township Register																			
MM4 Comm4					Subdivision of erf 799 In Ntha Lindley to accommodate church and crèches sites	Number of church sites and number of crèche sites								3 Church sites 3 Crèches sites	0	3 Church sites 3 Crèches sites	Not completed due to financial constraints		Not completed due to financial constraints	To be addressed in the new FY	Not applicable to the financial year		Number of church sites and number of crèche sites	3 Church sites 3 Crèches sites
MM5 Comm5					Subdivision of Townland for medicinal herbs plantation in Reitz	Number of portions of land subdivided								1	0	1	Not completed due to financial constraints			To be addressed in the new FY	Not applicable to the financial year		Number of portions of land subdivided	1
MM6 Comm6					Consolidation of 14 erven in Mamafu bedu <i>Explanation:</i> When sites were	Number of erven consolidated (new numbers will be	Currently 28 erven; there should only be 14					28, consolidated into 14	0			28, consolidated into 14	Not completed due to financial constraints	Not completed due to financial constraints	To be addressed in the new FY	Not applicable to the financial year		Number of erven consolidated	28, consolidated into 14	

R ef N o	Key Perfor manc e Area	IDP Prio rity	Vote/ Funct ion	Key Performance Indicator			Bas eline	Target s							Annua l Target	Perfor mance Feedb ack	Pro of of evid enc e	Reas on for deviat ion	Reme dial action	2013/14		2015/16	
				Objec tive	Indicato r	Unit of meas urement		Jul y- Se pt 201 4	Ac tua l	O ct - D ec 20 14	Ac tua l	Jan- Marc h 2015	Ac tua l	April- June 2015	Ac tua l					Target	Act ual	Objectiv e/ target	Targe t
					allocated to beneficiaries, each was allocated two sites, with different number, which must now be consolidated into one. (28 sites were allocated, which must now be consolidated into 14)	alloca ted)																	
M M 7 C o m 7					Allocate 800 sites in extension 6 Petsana Reitz, according to the Municipal Housing data-base	Num ber of sites alloca ted	800							800	0	800	The Town Establishment was completed and approved. However no sites were allocated	Due to financial constraints the sites could not be serviced because the bulk infrast	Applied for funding from COGT A. To be addressed in the next financial year.	Not applicable to the financial year			

R ef N o	Key Perfor manc e Area	IDP Prio rity	Vote/ Funct ion	Key Performance Indicator			Bas eline	Tar get s							Annua l Target	Perfor mance Feedb ack	Pro of of evid enc e	Reas on for deviat ion	Reme dial action	2013/14		2015/16	
				Objec tive	Indicato r	Unit of meas urement		Jul y- Se pt 201 4	Ac tua l	O ct - D ec 20 14	Ac tua l	Jan- Marc h 2015	Ac tua l	April- June 2015	Ac tua l					Target	Act ual	Objectiv e/ target	Targe t
																ed becau se no service s could be provid ed		structur e canno t handl e the additio nal load					
M M 8 C o m m u n i t y					Housing demand database in all four towns (Data base = Lists of benef iciaries who are applyi ng for housi ng subsi dies)	Num ber of housi ng dema nd datab ases	New			1 per unit = 4	1 per unit = 4					1 per unit = 4	There is a databa se per unit. The databa se is consta ntly update d	Cop y of the data base		1 per unit = 4	The Housi ng dem and data base for each unit is already comple d	Housing demand databas e in all four towns	1 per unit = 4
M M 9 C o m m u n i t y					Audit of site allocatio n allocated to beneficia ries	Num ber of audit s report s per new	New						1 report per new townsh ip establi	0	1 per new townsh ip establi	1 per new townsh ip establi	Not achi eved	This will be done in co- operat ion of Intern al	The matter will be includ ed in their Audit	1 per new townsh ip establi	To be assisted by Intern al	Number of audits reports per new township	1 per new townsh ip establi

Ref No	Key Performance Area	IDP Priority	Vote/ Function	Key Performance Indicator			Baseline	Targets							Annual Target	Performance Feedback	Proof of evidence	Reason for deviation	Remedial action	2013/14		2015/16	
				Objective	Indicator	Unit of measurement		July-Sept 2014	Actual	October-December 2014	Actual	Jan-March 2015	Actual	April-June 2015						Actual	Target	Actual	Objective/target
m9					ries that were on the database of the new township establishments	township establishment								shment (= 3)		shment (= 3)		al Audit.	plan for the coming financial year	shment (= 3)	Audit. Not achieved yet, Move to 4 th quarter	establishment	shment (= 3)
					Standard: The audit dealt with the question whether sites were correctly allocated to registered beneficiaries																Establishment and operationalization of a Municipal Tribunal consisting of 8	1	

Ref No	Key Performance Area	IDP Priority	Vote/ Function	Key Performance Indicator			Baseline	Targets							Annual Target	Performance Feedback	Proof of evidence	Reason for deviation	Remedial action	2013/14		2015/16	
				Objective	Indicator	Unit of measurement		July-Sept 2014	Actual	Oct - Dec 2014	Actual	Jan-March 2015	Actual	April-June 2015						Actual	Target	Actual	Objective/ target
																						members	
																						Number of delegations approved	1
																						Number of members and officials trained	8
																						Number of by-laws approved	1
																						Number of tariff structures, with budget approved	1
																						Number of budgets for the tribunal finalized	1

Component B: Roads and Transport

3.6 Roads, Transport and Stormwater

Figure / Table 3.44: Status Quo Analysis: Roads & Storm water

<i>Status Quo:</i>	Refer to Tables below
<i>General, Roads:</i>	<ul style="list-style-type: none"> • The condition of roads and storm water in Nketoana needs urgent attention. Although quite a significant part of roads in the towns are tar roads, the condition is deteriorating. • Paved roads were constructed in Petsana, Mamafubedu, Ntha and Leratswana. It was an immense improvement and made all areas more accessible.
<i>Storm water:</i>	<ul style="list-style-type: none"> • Storm water management is still a challenge to the municipality. The gradient of the areas are is of such a nature that considerable damage can be caused by rain water. The paving of roads prevent damage. It is nevertheless still necessary to improve existing stormwater channels and construct more in each area; especially those areas traditional developed urban areas. • The following stormwater challenges were noted in the Roads and Storm water Masterplan (Nektoana Local Municipality, Roads and Stormwater Masterplan, 2011): <ul style="list-style-type: none"> • Construction of sewer manholes in stormwater channels and hence increasing the incidence of Stormwater Ingress into the sewer systems which studies have indicated that has adverse effects on the capacity of the wastewater treatment works. Standards have to be developed such that the service providers work in accordance with the best practice procedures. • Inadequate sizing of the critical hydraulic structures in the various streams in all the towns which lead to serious flooding • The stormwater channels are seemingly constructed with grades that are lower than the stipulated minimum grades and hence the high incidence of the development of water puddles in the open stormwater drains. In addition, this problem also manifests itself as severe sedimentation/silting with the problematic areas leading to large quantities of sand being deposited in the affected areas • Major stormwater challenges are experienced in Ntha. To alleviate this problem, a new gabion-lined stormwater channel is required. • Inadequate sizing of culverts that threaten to wash away the newly constructed roads.

*Status of arterial roads /
internal roads*

- Access roads are priorities
- Streets and storm water network need to be better maintained
- Ageing tar roads become not accessible
- There is a need to properly maintain gravel roads; but the huge backlog in this regard remains a problem
- Some roads are used by heavy vehicles – attention must be given to allocate specific roads to heavy vehicles to keep them out of the CBD areas of the main towns.



Figure / Table 3.45: Road Length and Road Category Summary

Road Length Summary					
Settlement	Tarred(m)	Paved(m)	Gravel(m)	Dirt(m)	Total(m)
Petsana	8,947	2,686	40,703	0	52,336
Reitz	39,918	0	1,283	0	38,201
Mamafubedu	1,872	5,756	25,414	2,326	35,369
Petrus Steyn	8,320	0	9,136	1,420	18,876
Ntha	559	6,169	29,015	0	35,744
Lindley	4,682	0	12,266	0	16,948
Leratswana	715	3,408	10,214	0	14,337
Arlington	3,158	0	1,853	124	5,134

Road Category Summary				
Category	Road Type	Length (km)	Percentage	Percentage
UA	Gravel	0.0	0.00%	11.10%
	Paved	0.0	0.00%	
	Tarred	4,254.9	100.00%	
	Dirt	0.0	0.00%	
	Total	4,254.9		
UB	Gravel	0.0	0.00%	10.00%
	Paved	0.0	0.00%	
	Tarred	3,804.5	100.00%	
	Dirt	0.0	0.00%	
	Total	3,804.5		
UC	Gravel	0.0	0.00%	10.70%
	Paved	0.0	0.00%	
	Tarred	4,093.1	100.00%	
	Dirt	0.0	0.00%	
	Total	4,093.1		
UD	Gravel	1,282.9	4.90%	68.20%
	Paved	0.0	0.00%	
	Tarred	24,765.5	95.10%	
	Dirt	0.0	0.00%	
	Total	26,048.5	0.00%	

(Source: Nketoana Local Municipality, Roads and Stormwater Masterplan, 2011)

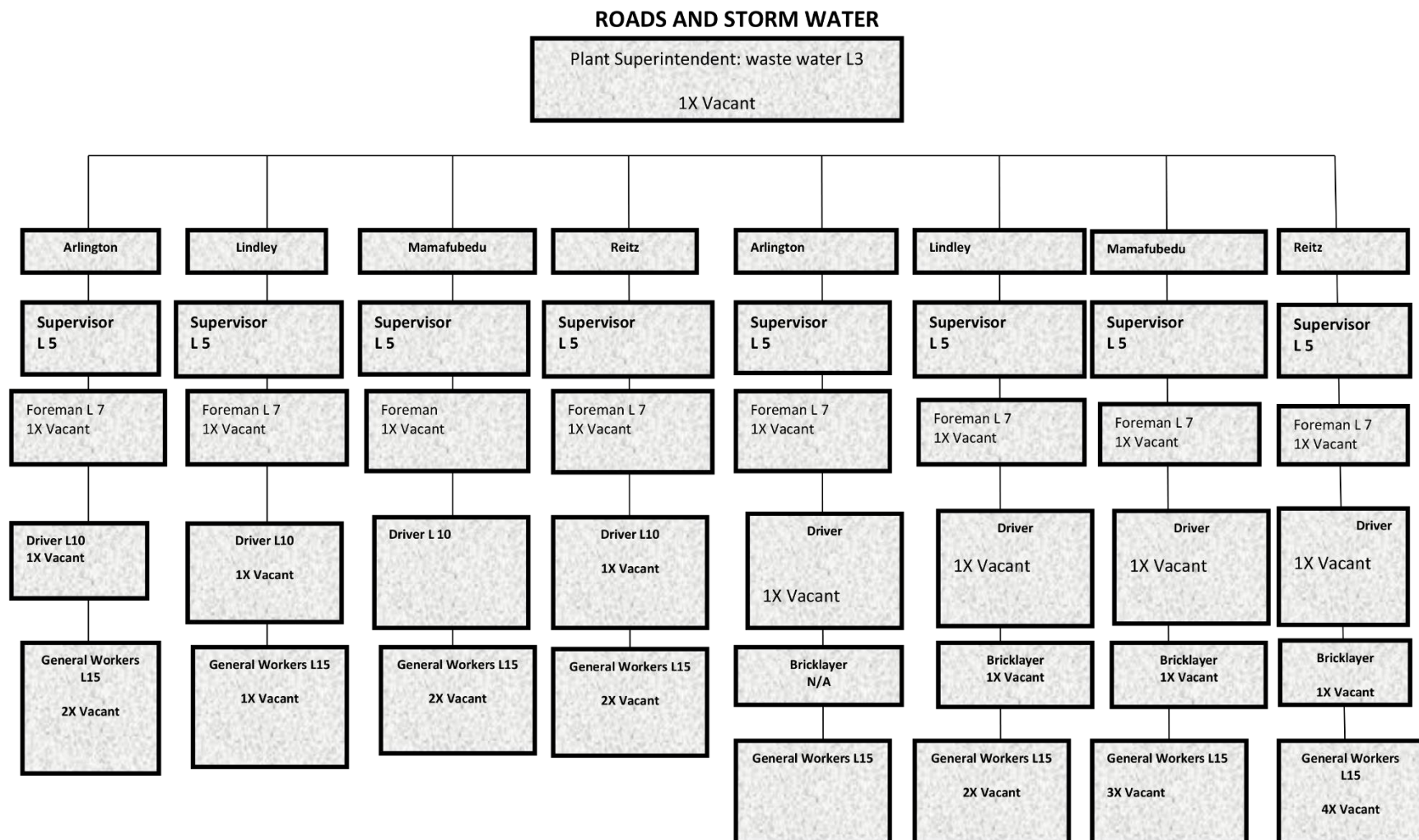
Figure / Table 3.46: Transportation Infrastructure (Nketoana SDF, 2010-2011)

Infrastructure	Reitz / Petsana	Mamafubedu (Petrus Steyn)	Arlington / Leratswana	Lindley / Ntha
Roads	<p>A variety of road networks links Reitz-Petsana with the surrounding area and other urban centers.</p> <p>The provincial road R26 links Reitz with Bethlehem to the</p>	<p>The provincial road R57 between Reitz and Heilbron are also the main access to Mamafubedu (Petrus Steyn).</p> <p>Mamafubedu (Petrus Steyn) is linked to Lindley and Frankfort</p>	<p>The provincial road P40/1 between Lindley and Senekal are also the main access to Arlington.</p> <p>Arlington-Leratswana is developed in a linear form and</p>	<p>The R707 between Arlington and Mamafubedu (Petrus Steyn) is the main road link and separates Lindley and Ntha.</p>

Infrastructure	Reitz / Petsana	Mamafubedu (Petrus Steyn)	Arlington / Leratswana	Lindley / Ntha
	<p>southwest and with Frankfort to the northeast.</p> <p>The provincial road R57 links Reitz with Mamafubedu (Petrus Steyn) to the north and Kestell to the south.</p> <p>Reitz is linked to Vrede with the secondary road S/589 and Warden with S/74.</p>	<p>with the road R707 and to Edenville with the secondary road S/66.</p>	<p>must receive careful future planning.</p>	<p>The P19/1 links Lindley with Steynsrus and Bethlehem and the S/192 links Lindley with Reitz.</p>
Rail	<p>The Reitz-Petsana station services the main railway line linking Gauteng and the Eastern Free State, used predominantly for the transportation of goods, especially agricultural goods. The station is situated next to the industrial area.</p>	<p>The railway station is accessible from both Mamafubedu (Petrus Steyn) and has access to the industrial area. It is situated on the line linking Heilbron and Lindley. The line is mainly used for goods transportation, especially to and from the grain silos. The railway station buildings are worn down and vandalized.</p>	<p>The railway line, that links Bethlehem and Steynsrus, runs through Arlington and was responsible for the establishment of Arlington and still poses economic developmental potential.</p>	<p>The railway line between Arlington and Mamafubedu (Petrus Steyn) runs just south of Lindley.</p> <p>The station is dormant, but should be re-opened and upgraded to promote economic development.</p>
Air	<p>There is no airport, but there is an airstrip north of the Reitz-Petsana urban area. It is principally used by crop-sprayers. The runway is not tarred.</p>	<p>There are no airfields or landing strips.</p>	<p>There are no airfields or landing strips.</p>	<p>There is an informal landing strip.</p>
Public Transport	<p>People from Petsana that works in Reitz walk there, due to the close proximity. Alternatively, there is taxi's servicing Petsana.</p>	<p>Taxis provide the predominant public transportation to especially the people of Mamafubedu.</p>	<p>Taxis provide the predominant public transportation. The taxi rank needs proper development and upgrading.</p>	<p>There is a need for a proper taxi rank.</p>

(Source: Nketoana SDF, 2010,11)

Figure / Table 3.47: Organogram



IDP Priority 3:	Municipal Roads and Transport
Strategic Objective:	To ensure that internal roads in the Nketoana municipal area are maintained and/or upgraded to facilitate economic and social activity required for the sustainable development of the municipality; considering the capacity limitations facing the Municipality
Outcomes:	<ul style="list-style-type: none"> Upgrading of 3km of internal roads in Ntha during the 2013/14 financial year Upgrading of 3km of internal roads in Mamafubedu during the 2013/14 financial year
Vote:	Road Transport
Sub-function:	Roads

Actual performance against SDBIP targets set for the 2013/14 Financial Year and comparative assessment of targets with targets set for 2013/14 and 2015/16

Ref No	Key Performance Area	IDP Priority	Vote/ Function	Key Performance Indicator			Baseline	Targets								Annual Target	Performance Feedback	Proof of evidence	Reason for deviation	Remedial action	2013/14		2015/16	
				Objective	Indicator	Unit of measurement		July - Sept 2014	Actual	Oct-Dec 2014	Actual	Jan - March 2015	Actual	April-June 2015	Actual						Target	Actual	Objective/ target	Target
MM 50 Tech 23		Municipal Roads and Transport	Road Transport Road and Storm water infrastructure management	To ensure that internal roads in the Nketoana municipal area are maintained and/or upgraded to facilitate economic and social	Review of the Roads and Infrastructure Master Plan	Number of Plans reviewed	1							1	Current plan still relevant and applicable and in use	1	Not reviewed due to financial constraints. The current plan is still applicable and useful		Financial constraints	To be addressed when funds are available, Applied for funds at the Department of Transport	1	0	Review of the Roads and Infrastructure Master Plan	1

Ref No	Key Performance Area	IDP Priority	Vote/ Function	Key Performance Indicator			Baseline	Tar gets							Annual Target	Performance Feedback	Proof of evidence	Reason for deviation	Remedial action	2013/14		2015/16	
				Objective	Indicator	Unit of measurement		July - Sept 2014	Actual	Oct-Dec 2014	Actual	Jan - March 2015	Actual	April-June 2015						Target	Actual	Objective/ target	Target
				activity required for the sustainable development of the municipality; considering the capacity limitations facing the Municipality																			
MM 51 Tech 24					Repair potholes on demand	Potholes repaired		5	5	5	5	5	5	5	20	Potholes are repaired as required and on demand	Photos						
MM 52 Tech 25			Roads		Upgrading of Roads in Petsana by paving 3 km.	1 km								1km	50% done according to the project plan. Different layers to be	50% done according to the project plan. Different layers to be complet	Photos and progress report	The condition of the road, was worse than anticipated and	To be addressed in the next financial year	Project completed 1	1	Upgrading of Roads in Petsana by paving 3 km.	2,2 km

Re f N o	Key Perfor mance Area	IDP Prior ity	Vote/ Func tion	Key Performance Indicator			Base line	Tar gets							Ann ual Tar get	Perfor mance Feedba ck	Proo f of evid ence	Reas on for devia tion	Reme dial action	2013/14		2015/16	
				Objecti ve	Indicat or	Unit of measur ement		July - Sep t 201 4	Act ual	O ct- Dec 20 14	Act ual	Jan - Mar ch 201 5	Act ual	Ap ril- Ju ne 20 15						Actu al	Targe t	Act ual	Objecti ve/ target
					Phase 1 : 1km for the 2014/2 015 financia l year									compl eted befor e the pavin g can be done		ed before the paving can be done	Proje ct plan	the projec t entail ed more than expect ed.			Phase 1 : 1km for the 2014/2 015 financia l year Phase 2: 2.2 km for the 2015/2 016 financia l year		